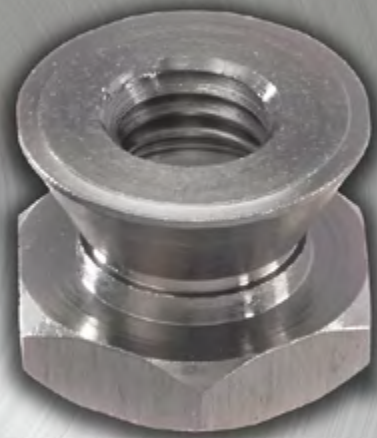




TAMPER-RESISTANT Break-Away Nuts



Break-Away nuts are designed to prevent unauthorized removal and to secure access to equipment and facilities. No special tool is required, Break-Away nuts are installed using a standard wrench. They are used extensively in correctional institutions, hospitals, schools, public places and retail stores to secure a variety of products.

Break-Away nuts are suitable for applications where removal of a fixture is not intended and when prevention of tampering is important. Manufactured from ZAMAK 5 zinc alloy and 304 stainless steel. Stainless steel offers greater corrosion resistance and high-strength properties compared to zinc alloy. The nuts are tapped to standard bolt dimensions and are also available tapped oversize for hot dip galvanized fasteners.

ZAMAK 5 Zinc Alloy

Break-Away Nuts

SKU	Size	Box Qty.
10CBAWZ	10-24	100
25CNBAWZ	1/4"-20	100
31CNBAWZ	5/16"-18	100
37CNBAWZ	3/8"-16	100
50CNBAWZ	1/2"-13	50
62CNBAWZ	5/8"-11	25
M6CNBAWZ	M6-1.0	100
M8CNBAWZ	M8-1.25	100
10CNBAWZ	M10-1.5	100
M12CNBAWZ	M12-1.75	50

304 Stainless Steel

Break-Away Nuts

SKU	Size	Box Qty.
25CNBAWS	1/4"-20	100
31CNBAWS	5/16"-18	100
37CNBAWS	3/8"-16	100
50CNBAWS	1/2"-13	100
62CNBAWS	5/8"-11	50
M6CNBAWS	M6-1.0	100
M8CNBAWS	M8-1.25	100
M10CNBAWS	M10-1.5	100
M12CNBAWS	M12-1.75	50

Material Specifications Zamak 5

CHEMICAL COMPOSITION		MECHANICAL PROPERTIES	
Copper	0.75 - 1.25	Tensile Strength PSI	47,600
Aluminum	3.5 - 4.3	Yield Strength PSI (0.2% offset)	33,000
Magnesium	0.03 - 0.08	Shear Strength PSI	38,000
Iron (max.)	0.1	Elongation % inch per inch	7
Lead (max.)	0.005	Hardness BHN	91
Cadmium (max.)	0.004	Impact Strength Ft. Lb. (CHARPY)	48
Tin (max.)	0.003		
Zinc	Remainder		

Material Specifications 304 Stainless Steel

CHEMICAL COMPOSITION				MECHANICAL PROPERTIES	
Carbon	0.08	Chromium	0.75	0.2% Offset Yield Strength, PSI	30,000
Manganese	2	Cadmium (max.)	18.0 - 20.0	Ultimate Tensile Strength PSI	75,000
Phosphorus	0.045	Nickel	8.0 - 10.5	Elongation % in 2in.	40
Sulfur	0.03	Aluminum	0.1	Hardness, Max., Brinell	201

Dimensional Data for Break-Away Nuts

T. THREAD	A. BOTTOM DIA. (MAX)	B. OVERALL HEIGHT	C. NUT HEIGHT	D. HEX
10-24	.4375	0.390	0.180	
1/4"-20	.5625	0.470	0.220	9/16"
5/16"-18	.6250	0.500"	0.220	5/8"
3/8"-16	.7500	0.580	0.250	3/4"
1/2"-13	1.0000	0.750	0.350	1"
5/8"-11	1.1250	0.800	0.370	1-1/8"
M6-1.0	.5625	0.470	0.220	9/16"
M8-1.25	.6250	0.500	0.220	5/8"
M10-1.5	.7500	0.580	0.250	3/4"
M12-1.5	1.0000	0.750	0.350	1"

